

DYNAMAX 

A DIVISION OF FOREST RIVER

DIFFERENT BY DESIGN



FORCE



Force HD 37BH with Espresso Décor

Who Says You Can't **Take it With You?**

Most traditional Class C's give you all the living space for a family, but not much more. The Dynamax Force offers GVWR's of 28,000 lbs (Force) and 33,000 lbs. (Force HD). Not only can you bring the whole family, but you can also bring all the toys, gear, clothes, groceries, and everything else it takes to support a family on the go.

Half The FUN Is The Journey



Unlike flat-front, bus-style motorhomes, a Class C utilizes an automotive cab chassis for better airflow, fuel economy, performance, and added safety.



FORCE

Power and Performance

- **Freightliner M2 106 Chassis** offers a 55-degree turning radius
- **Cummins ISB 6.7L Diesel**
- 340 Horsepower
- 700 lb-ft of Torque
- **Allison 2500 MH Automatic Transmission** Delivers the Power, Control, and Traction to Handle Any Situation
- 28,000-lb GVWR
- 33,000-lb GCWR
- 10,000-lb Hitch
- 80 Gallon Fuel Capacity
- **Bilstein Front Shocks** for Optimum Ride Quality and Control
- Exhaust Brake

A New Generation

If That's Not Enough,
Step Up to the



Chassis Enhancements

- **Cummins ISL 8.9L**
- 350 Horsepower
- 1000 lb-ft of Torque
- **Allison 3200 TRV Automatic Transmission**
- 33,000-lb GVWR
- 54,000-lb GCWR
- 2-Stage Engine Brake
- Locking Differential
- 20,000-lb Hitch
- 100 Gallon Fuel Capacity

Additional Upgrades

- Enhanced Full Body Paint
 - Six Color with Ghost Pearl Layer
 - More Drop Shadows
 - Two Color Logos with HD Badging
- Air Ride Cab Seats with Swivel Pedestals
- Ceramic Tile
- Corian Galley, Lav, and Nightstands
- Burlwood Dash



Versatile sleeping and entertainment features include this overcab bunk with a 39" LED TV on a Powered Swing Arm.



Optional 50" TV with Fireplace (37BH Only)



Force HD 37TS with Pebble Décor



37BH Bunk Beds



Casual Luxury

Every Force offers a residential memory foam mattress with iCool® technology, plenty of wardrobe and drawer space, and a 32" LED TV with Soundbar.

Legendary Paint

From Start to Finish



Driftwood (Force HD – Desert Mirage*)



Billet (Force HD – Black Mirage*)

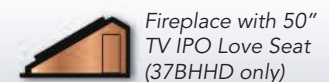
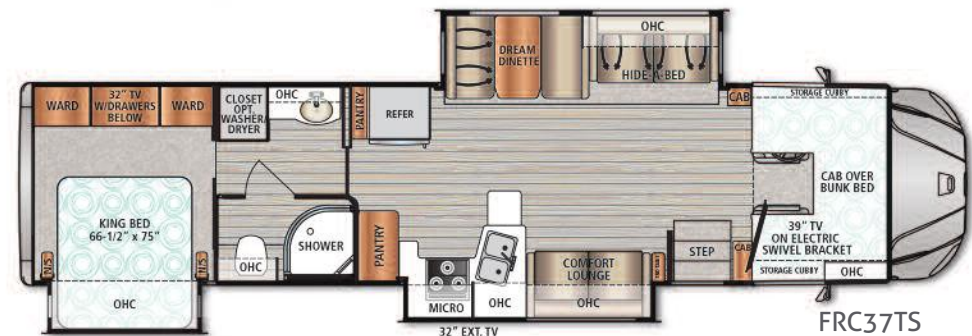
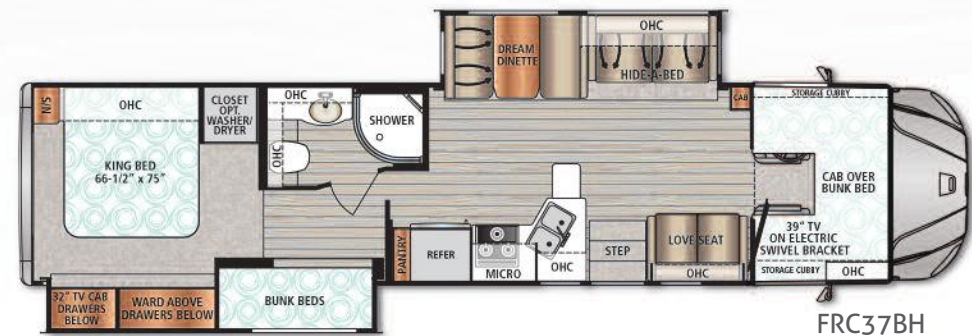
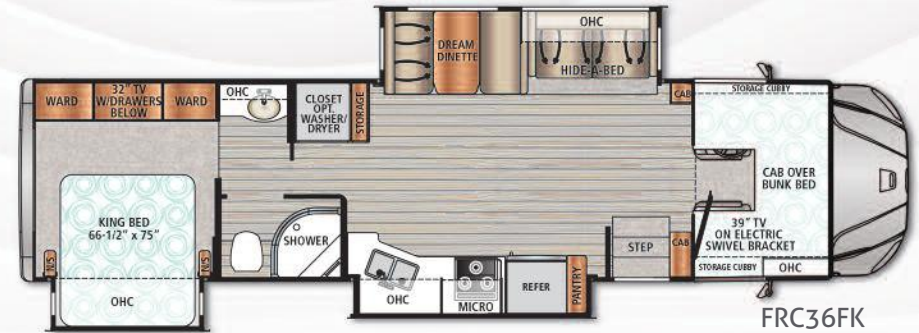
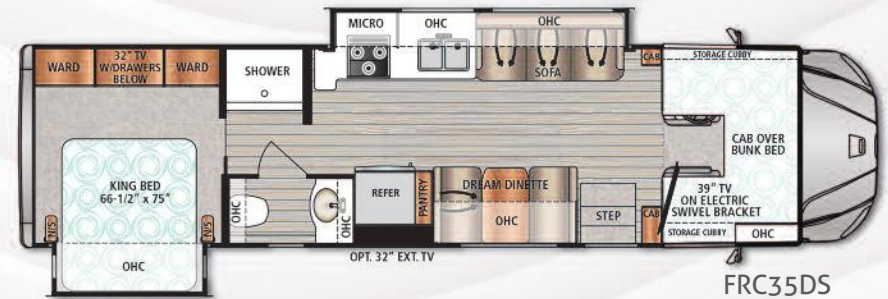
*Force HD includes enhanced full-body paint.

Each and every motorhome undergoes the same painstaking process that has made our paint renowned in the industry.

- Remove most trim (instead of masking)
- Sand every inch to be painted
- Prime and seal
- Apply base paint (1-6 colors)
- Air brush drop shadows
- Apply multiple coats of clear
- Bake on the finish
- Cut and buff (the key to turning an average paint job into a show-stopping work of art)
- 3M Diamond Shield® to protect key areas



Dynamax has three on-site 25' x 60' downdraft paint booths. This means we have maximum control of quality. By painting parts and slide-outs before they are installed, we eliminate overspray on slide seals and interior components.



Force Standard Features & Options

Chassis

- Freightliner® M2 106 Chassis; Cummins® 6.7L 340hp/700 lb.-ft. of Torque
- Allison® 2500 MH Six-Speed Automatic Transmission
- GVWR: 28,000 lbs.
- GCWR: 33,000 lbs.
- Trailer Hitch: 10,000 Tow lbs./1,000 Tongue lbs. with 7-Way Flat Pin Tow Connection
- Fuel Capacity: 80 Gallons (Twin 40-Gallon Aluminum Fuel Tanks)
- 6-Gallon Diesel Exhaust Fluid Tank
- Equiflo™ Inboard Fuel System
- Fuel Filter/Water Separator with Primer Pump
- Engine After-Treatment Device, Automatic Over-the-Road Regeneration, and Dash-Mounted Regeneration Switch
- Cummins® Exhaust Brake
- Air Brakes with 4-Wheel ABS
- Airliner 18,000-lb. Rear Suspension
- Steel Frame: 11/32" x 3-1/2" x 10-15/16"
- 10,000-lb. Front Axle
- 19,000-lb. Quiet Ride Rear Axle
- Powder and Liquid Coated Steel Frame Chassis Construction
- Full Coverage Heavy Duty Undercoating
- 5.13 Rear Axle Ratio
- Front and Rear Tires: Michelin XZE2 275/80R22.5 (14 Ply Radials)
- Front and Rear Wheels: Alcoa 22.5 x 8.25 Polished Aluminum Wheels (*Note: Only Outside Rims Are Polished)
- Aluminum Cab
- Chrome Grille and Air Intake Grille
- Daytime Running Lights
- Tinted Door Glass and Operating Wing Windows
- Stainless Steel Cab Risers with Polyurethane-Coated Step Treads
- One Valve Parking Brake System with Warning Indicator
- Momentary Battery Booster Switch for Connecting Chassis and House Batteries
- Driver and Passenger 6-Way Power Seats
- Radio - 6.1" Touch Screen and Premium Sound System with AM/FM/CD/DVD/Bluetooth including:
 - Sirius/XM Satellite Radio Ready (Requires Activation and Subscription)
 - GPS RV Software
 - Color Monitor for Side and Rear Cameras
 - USB and Auxiliary Inputs
- Tilt and Telescoping Steering Column
- Marker Lights with Separate Interrupter Switch
- Low Air Pressure Light and Buzzer
- 12V Accessory Ports
- Electronic Cruise Control

- Power Remote/Heated Mirrors
- Power Locks
- Power Windows - Driver and Passenger
- Three-Point Seat Belts - Driver and Passenger
- Electronically-Controlled Dash Air Conditioning
- Dual Reading Lights
- Two (2) Cup Holders in Dash
- Option: Bilstein Gas-Charged Front Shock Absorbers

Construction

- 2" Laminated Constructed Sidewalls
- Gel-Coat Fiberglass Walls
- 2-1/4" Thick Laminated Aluminum Floor
- One-Piece Textured and Radius Corner Domed Fiberglass Roof
- Aerodynamic Fiberglass Front Cap, Rear Cap, and Front Transition Panels
- R-8 Insulated Sidewalls; R-8 Insulated Floor; R-11 Insulated Roof
- Four-Point Fully Automatic Hydraulic Leveling Jacks
- Dark-Tinted Frameless Windows
- Rotational-Molded, Easy-Clean Storage Compartments
- Electric Slide System
- Option: Dual-Pane, Dark-Tinted Frameless Windows

Exterior

- Custom Full Body Paint and Diamond Shield
- Patio Awning with LED Lighting
- LED Patio Light
- Aluminum-Wrapped Slide Out Toppers
- Keyless Pad at Entry Door
- Black-Trimmed Entry Door with Screen and Deadbolt Lock; Tinted, Frameless Window with Shade
- Acrylic Entry Grab Handle
- Exterior Power Entry Step
- Exterior Wall-Mounted Entertainment Center with 32" LED TV, AM/FM/CD/DVD Radio with Two (2) Speakers (N/A - 35DS)
- Aluminum Side-Hinged Locking Exterior Storage Doors with Paddle Latches
- Front and Rear LED Clearance and Marker Lighting

Interior

- Fold-Over Sleeper Sofa
- Dream Dinette
- Loveseat (37BH and 37TS)
- Beauflor® Vinyl Flooring
- Deluxe Carpet with Pad (Slide Room and Bedroom)
- Deluxe Padded Vinyl Ceiling
- LED Flush-Mount Ceiling Lighting
- Coordinating Fabric and Wood Window Valances and Lambrequins
- Manual Day/Night Roller Shades
- Wrapped Stile Cabinets with Raised Panel Cabinet Doors

- Hardwood Raised Panel Passage Doors
- Hidden Hinge Cabinet Door Hardware
- Full Extension Ball Bearing Drawer Guides
- Lighted Entry Step
- Front Privacy Shade
- 39" LED TV (Living Area)
- Blu-Ray® Home Theater System (Living Area)

Kitchen

- Residential Refrigerator: Stainless Steel 16 cu. ft. Double Door with Ice Maker
- Option: RV Refrigerator - 12 cu. ft.; 4-Door with Ice Maker
- Recessed 3-Burner LP Cooktop with Solid Surface Covers
- Convection Microwave - Stainless Steel
- Solid Surface Galley Countertops
- Tile Backsplash
- Pull-out Pantry
- Double-Bowl Solid Surface Sink
- Solid Surface Sink Covers
- Single-Handle Faucet with Pullout Sprayer
- MaxxAir® Power Vent with Built-In Rain Cover

Bedroom

- King Mattress (66.5" x 75") with iCool® Sleep System (Gel-Infused Memory Foam)
- Lift-Up Bed with Under-Bed Storage (37TS only)
- Designer Bedspread, Pillow Shams, and Pillows
- 28" x 76" Bunk Bed Mattresses and Privacy Partition (37BH Only)
- Wardrobe Closet
- Nightstands
- Deluxe Padded Headboard
- Deluxe Carpet with Pad
- 32" LED TV with Sound Bar
- Option: (2) Bunk 12V DVD Players (37BH Only)

Bathroom

- Color Coordinated Fiberglass Shower

- Shower Skylight
- Glass Shower Door
- Metal Adjustable Shower Head with On/Off and Matching Faucet
- Porcelain Foot-flush Toilet (Floorplan Specific)
- Laminate Vanity Countertop
- Residential Brushed Nickel Faucet
- Deluxe Medicine Cabinet
- MaxxAir® Power Vent with Built-In Rain Cover

Utilities

- Two (2) 12V Group 31 AGM Auxiliary Batteries
- Battery Disconnect
- 50-Amp Service with Power Cord Reel
- 1,800W Inverter
- Onan® 8kW Diesel Generator with Auto Transfer Switch
- Dual Air Conditioners: Roof-Mount and Ducted 15,000 BTU with Heat-Pump
- 40,000 BTU LP Furnace System
- 10-Gallon LP/Electric Water Heater with By-Pass Valve
- LP Tank: 20.3 gallon (WC)
- LP Quick Connect
- Thermostatically-Controlled Heating
- Interior Monitor Panel with LPG/Tank/Battery Readout
- Exterior Shower in Service Bay
- Exterior GFCI Receptacle
- Water Purification System (Whole Coach)
- Exterior Park Cable Hookup
- Black Tank Flush
- 12V High-Capacity, On-Demand Water Pump
- Converter
- Carbon-Monoxide, LP Gas, and Smoke Detectors
- Fire Extinguisher
- Winegard® In-Motion Satellite Dome
- Option: Canadian Shaw® Traveler Satellite Dish
- Option: Stackable Washer/Dryer (N/A - 35DS)

Key Dimensions:	FRC35DS	FRC36FK	FRC37BH	FRC37TS
Overall Length	35' 5"	36' 8"	39' 1"	39' 1"
Exterior Width	101"	101"	101"	101"
GCWR	33,000	33,000	33,000	33,000
GVWR	28,000	28,000	28,000	28,000
GAWR Front	10,000	10,000	10,000	10,000
GAWR Rear	18,000	18,000	18,000	18,000
Wheelbase	237"	270"	270"	270"
Overall Height with 15,000 BTU A/C	13' 0"	13' 0"	13' 0"	13' 0"
Interior Height	7' 0"	7' 0"	7' 0"	7' 0"
Fuel Capacity	80 gal.	80 gal.	80 gal.	80 gal.
Fresh Water	100 gal.	100 gal.	100 gal.	100 gal.
Grey Water	52 gal.	52 gal.	52 gal.	52 gal.
Black Water	52 gal.	52 gal.	52 gal.	52 gal.
LP Capacity	20.3 gal./86 lb.	20.3 gal./86 lb.	20.3 gal./86 lb.	20.3 gal./86 lb.

SEE PAGE 3 FOR



UPGRADES

Power, Prestige and Precision

For the motorhome enthusiast, the drive is as important as the destination. We start with a commercial grade chassis designed to exceed the comfort and safety demands of professional drivers. We then add a well designed, functional interior, a head-turning exterior, and bundle it all up in a fun-to-own package – hand crafted by Dynamax.



At Dynamax, reaching a higher standard is not an option, it's a tradition.



DIFFERENT BY DESIGN

2745 Northland Dr. ■ Elkhart IN 46514
888-295-7859 ■ www.dynamaxcorp.com

Your Authorized Force Dealer



GVWR (Gross Vehicle Weight Rating) - is the maximum permissible weight of the unit when fully loaded. It includes all weights, inclusive of all fluids, occupants, cargo, optional equipment and accessories. For safety and product performance do NOT exceed the GVWR.

GCWR (Gross Combined Weight Rating) - is the maximum permissible loaded weight of your motor home and any towed trailer or towed vehicle. Actual GCWR of this vehicle may be limited by the sum of the GVWR and the installed hitch receiver maximum capacity rating; see hitch rating label for detail.

GAWR (Gross Axle Weight Rating) - is the maximum permissible weight, including cargo, fluids, optional equipment and accessories that can be safely supported by each axle.

UVW (Unloaded Vehicle Weight)* - is the typical weight of the unit as manufactured at the factory. It includes all weight at the unit's axle(s), including full fuel, all fluids and LP Gas. The UVW does not include cargo, fresh potable water, additional optional equipment or dealer installed accessories.

*Estimated Average based on standard build optional equipment.

CCC (Cargo Carrying Capacity)** - is the amount of weight available for fresh potable water, cargo, passengers, additional optional equipment and accessories. CCC is equal to GVWR minus UVW. Available CCC should accommodate fresh potable water (8.3 lbs per gallon). Before filling the fresh water tank, empty the black and gray tanks to provide for more cargo capacity.

**Estimated average based on standard build optional equipment.

Each Forest River RV is weighed at the manufacturing facility prior to shipping. A label identifying the unloaded vehicle weight of the actual unit and the cargo carrying capacity is applied to every Forest River RV prior to leaving our facilities.

The load capacity of your unit is designated by weight, not by volume, so you cannot necessarily use all available space when loading your unit.

Actual towing capacity is dependent upon your particular loading and towing circumstances, which includes the GVWR, GAWR and GCWR as well as adequate trailer brakes. Please refer to the Operator's Manual of your vehicle for further towing information.

All information contained in this brochure is believed to be accurate at the time of publication. However, during the model year, it may be necessary to make revisions and Forest River, Inc., reserves the right to make all such changes without notice, including prices, colors, materials, equipment and specifications as well as the addition of new models and the discontinuance of models shown in this brochure. Therefore, please consult with your Forest River dealer and confirm the existence of any materials, design or specifications that are material to your purchase decision. ©2017 Dynamax, a Division of Forest River, Inc., a Berkshire Hathaway company. All Rights Reserved. 10/17



PRE-DELIVERY INSPECTION FACILITY

20,000 square feet of quality assurance. The bare essentials for a premium product. This state-of-the-art facility gives immediate daily feedback to production for quality assurance in every unit built.

24/7 EMERGENCY ROADSIDE ASSISTANCE

For a worry-free ownership experience

Forest River includes one year of Coach-Net RV Technical & Roadside Assistance with each RV purchase. Whether new to the RV lifestyle or an experienced RV enthusiast, Forest River owners have 24/7 access to technical, operational and emergency road service coverage throughout the US & Canada. Coach-Net's fast, dependable service is just a phone call away.

Coach-Net®
RV Technical & Roadside Assistance

FREE MEMBERSHIP
to Forest River Owners' Group

www.forestriverfrog.com



Learn More

Scan this barcode using a QR Reader on your smart phone to learn more about Forest River.



A Berkshire Hathaway company.

CUSTOMER SATISFACTION



www.ForestRiverBuyLocal.com